

Compromise is a thing of the past

High Resolution Day&Night Color Camera

# SDC-415



- High Resolution of 530TV lines
- Day&Night Capability with High Sensitivity of 0.002Lux
- Disk Saving with Unique SSNR Technology





# Samsung's new **SDC-415** Da ...Cost effective surveillance

You may consider CCTV an important part of your security armoury but quite often budgetary restrictions result in a compromise on the quality of the cameras used. This has particularly been the case with Day/Night cameras when they are regarded as an ideal solution for applications where lighting levels are low or variable, yet have not always been looked at as an option because of its prohibitively high cost. The new **SDC-415** high resolution Day/Night camera realizes genuine cost effectiveness with absolutely no compromise on quality. High resolution color images during the day and equally high quality images at night, intelligent motion detection, privacy masking and on-screen display for easy set are all supplied as standard with the **SDC-415**. And unique to Samsung Techwin, the camera incorporates **SSNR**, Samsung Super Noise Reduction technology.

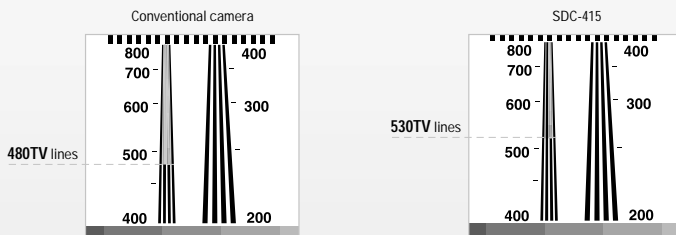


Ultra clear images

**530TVL** TV lines



The SDC-415 is packed full of professional CCTV technologies. Advanced Samsung optics, a high performance CCD image sensor and *WIII*, a newly developed high performance DSP chip combine to deliver high resolution of 530TV lines translating into sharp, clear images. It enables to see clearly in the dark, which is perfect for low light circumstances.



(EIAJ TEST CHART)

# Day/Night camera... without compromise

As low as 0.002Lux with Sens-up



**Day & Night** capability



Day



Night

The SDC-415 ensures high resolution color images down to an 0.3Lux @ F1.2 in daytime and when light levels fall even to a certain level the camera automatically switches to monochrome mode. Especially the unit boasts outstanding sensitivity of as low as 0.002Lux for excellent low light operations in color using Sens-up function(max. 128X).

Unique noise reduction technology (SSNR)



Max. 70% **Disk Saving** Effect



Disk Saving Effect



84.032 Bytes

100%

Conventional camera



25.803 Bytes

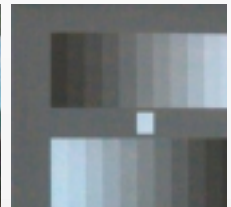
30%

SDC-415

Removing Picture Noise



Conventional camera



SDC-415

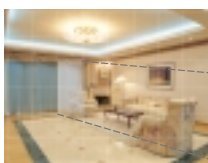
When lighting levels are low, SSNR dramatically reduces both random and fixed noise and at the same time produces a high signal to noise ratio and no ghost effect. In simple terms the result is clear sharp images, even in the most severe lighting conditions. The absence of any "ghost" effect, that is normally quite common in low light conditions, offers a higher level of identification - a big plus where, for example, there is a requirement to recognize number plates. An additional benefit of this technology is the reduced file size of recorded images. A DVR's recorded file size is reduced by a massive 70% when using a MPEG format and by 40% when using a JPEG format.

# High Resolution Day&Night Color Camera *SDC-415*



Versatile surveillance

## Intelligent **Motion Detection**



This professional camera is also equipped with the internal ability to detect motion in the scene they are viewing.



Motion Detected



Versatile surveillance

## Privacy **Masking**

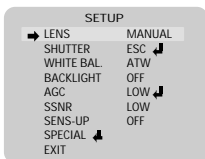


When the SDC-415 is observing a wide area, the captured images can be "masked" for privacy purposes. Users can easily configure the size and position of up to 4 required privacy zones.



Versatile surveillance

## Easy to use **OSD** menu



The unit supports user-friendly on-screen display capability for improved ease of operation.



OSD functions



Versatile surveillance

## Powerful **Automatic White Balance**



SDC-415's automatic white balance technology allows true color images without tending to be red or blue, which covers extensive color temperature of 1,800°K to 10,500°K.



Versatile surveillance

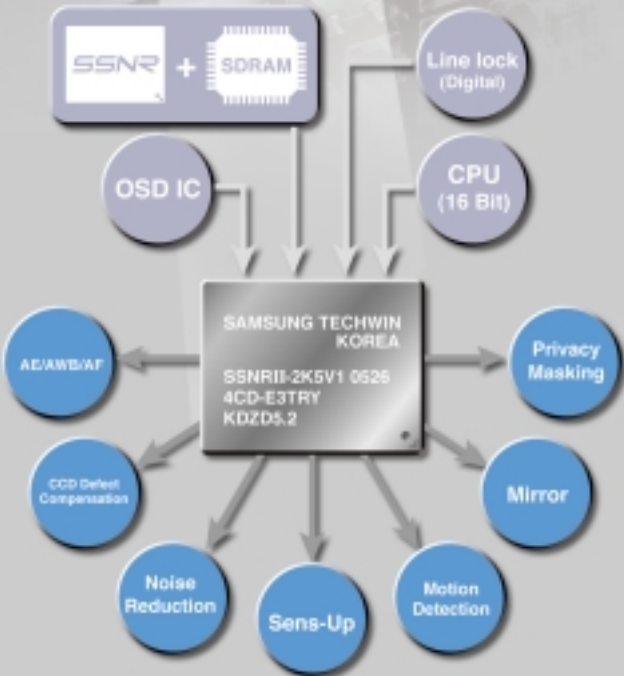
## Camera **ID Setting**

Users can use the camera identification (CAMERA ID) to assign a name to the camera. The camera ID consists of up to 15 alphanumeric characters.

Highly integrated camera engine

**WIII** DSP chip

At the heart of the SDC-415 is Winner<sup>WIII</sup>, a proprietary powerful new DSP engine that attains not only the ultra high resolution images but also various intelligent functions. All these essential functions have been successfully integrated into a single chip, which realizes genuine cost effectiveness of the camera. Samsung's new <sup>WIII</sup> enables the camera to conduct surveillance with higher resolution and adaptive image processing algorithms through the use of the increased internal memory and improved software efficiency.



**WIII**, New DSP

# SDC-415

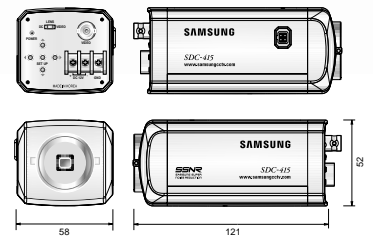
High Resolution Day & Night Color Camera



## Specifications

Model	SDC-415NA	SDC-415ND	SDC-415PA	SDC-415PD	SDC-415PH
Power Source	24V AC, 60Hz	12V DC	24V AC, 50Hz	12V DC	230V AC, 50Hz
Power Consumption	3.5W	2.5W	3.5W	2.5W	3.5W
Total Pixels	811(H) x 508(V)		795(H) x 596(V)		
Effective Pixels	768(H) x 494(V)		752(H) x 582(V)		
Image Pick-up Device	1/3" Sony Super HAD CCD				
Scanning System	2 : 1 Interlace				
Scanning Frequency	15.734KHz(H) / 59.94Hz(V)		15.625KHz(H) / 50.00Hz(V)		
Synchronization	Internal / Line lock	Internal	Internal / Line lock	Internal	Internal / Line lock
Resolution	530TV lines				
Video Output	1.0Vp-p / 75Ω (Video 0.714Vp-p, Sync 0.286Vp-p)				
S/N Ratio	50dB (AGC off / Sharpness off)				
Min. Illumination	0.3 Lux(F1.2) (Color) / 0.002 Lux (Sens-up, 128X)				
Day & Night	Off / Auto selectable (Electrical)				
Gain Control	Low / Middle / High / Off selectable				
SSNR	Low / Middle / High / Off selectable				
White Balance	ATW / AWC / Manual selectable (1800°K ~ 10,500°K)				
BLC	Low / Middle / High / Off selectable				
Electronic Shutter	Auto / Manual (1/60 ~ 1/120,000sec)		Auto / Manual (1/50 ~ 1/120,000sec)		
Sens-up	Auto / Off (Selectable limit 2X ~ 128X)				
OSD	Built-in				
Motion Detection	On / Off (4 Programmable zone)				
Mirror	On / Off (Horizontal image inversion)				
Privacy Function	On / Off (4 Programmable zone)				
Sharpness	On / Off (Level adjustable)				
IRIS Control	DC / VIDEO				
Lens Mount	C / CS Mount (Screw lock)				
Operating Temperature	-10°C ~ +50°C				
Operating Humidity	30% ~ 90% RH				
Dimension	58(W) x 52(H) x 121(D)mm				
Weight	300g	280g	300g	280g	470g (with power cable)

## Dimensions



## Rear Panel



AC



DC



PH

[www.samsungcctv.com](http://www.samsungcctv.com)

Design and specifications are subject to change without notice.



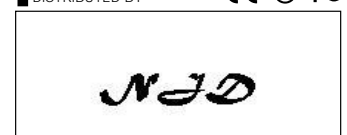
**SAMSUNG TECHWIN CO., LTD.**  
145-3, Sangdaewon 1-dong, Jungwon-gu,  
Seongnam-si, Gyeonggi-do 462-703, Korea  
Tel : +82-31-740-8137~8141 Fax : +82-31-740-8145

**SAMSUNG TECHWIN MOSCOW OFFICE**  
Korp 14, 37-A, PR-KT, Leningradsky,  
Moscow 125167, Russia  
Tel : +7-95-258-9296 Fax : +7-95-258-9297

**SAMSUNG OPTO-ELECTRONICS UK, LTD.**  
Samsung House, 1000 Hillswood Drive,  
Hillswood Business Park Chertsey, Surrey KT16 0PS  
Tel : +44-1932-45-5308 Fax : +44-1932-45-5325

**TIANJIN SAMSUNG OPTO-ELECTRONICS CO., LTD.**  
7 Pingchang Rd., Nankai Dist. Tianjin 300190, P.R China  
Tel : +86-22-2761-4724(33821) Fax : +86-22-2761-6514

■ DISTRIBUTED BY



I.D-0602